



# ELASTEC

POLLUTION CONTROL EQUIPMENT

Oil Spill | Trash & Debris | Silt & Turbidity  
Narcotic & Medical Waste  
Work Boats | Vacuums | Aquatic Weed Control





## WORKBOATS

- 4 Landing Craft
- 5 Inlander
- 6 Omni Catamaran
- 7 Custom Platform Boats



## DISPERSANT SYSTEMS

- 12 BoomVane™ Spray
- 12 NeatSweep®
- 13 ElaSpray



## EMERGENCY RESPONSE

- 8 Response Trailers & Containers
- 8 Spill Kits
- 9 D360 Drone Command Station



## CONTAINMENT BOOM & CURTAINS

- 14 ShoreMax
- 15 TundraGuard
- 16 BoomVane™
- 18 Curtain Boom
- 19 Fence Boom
- 20 AirMax
- 20 RubberMax
- 22 Boom Reels
- 23 Control Stands & Blowers
- 23 Boom Reel Power Packs
- 24 ReelPak Boom
- 25 Barrel-O-Boom
- 26 PermaFence
- 28 Turbidity Curtains
- 29 SiltMax Curtains
- 30 Baffles
- 31 Beach Bouncer
- 32 Mooring Accessories
- 33 Anchor Systems
- 34 Boom Accessories



## FIRE BOOM

- 10 American Fireboom
- 11 Hydro-Fire® Boom



## OIL SKIMMERS

- 36** X150
- 36** X150 Launching System
- 37** X30
- 38** TDS118
- 39** TDS136
- 40** 12v Mini
- 40** Magnum 100
- 41** MiniMax
- 41** Magnum 200
- 42** Hermit
- 42** Steam Heat Systems
- 43** ROV
- 43** Brush & Disc (Drum)
- 43** Configurations
- 44** SeaSkater Weir
- 44** OceanSkater Weir
- 45** Circus Weir
- 46** ShovelHead Suction
- 46** Pelican Weir
- 47** Duck Weir
- 48** Filterbelt
- 49** Skimmer Power Packs
- 50** Pumps



## VACUUM SYSTEMS

- 52** PACS Trailer Mounted
- 53** All Terrain Vac
- 54** Electric MiniVac
- 55** MiniVac II
- 55** MiniVac III
- 56** Accessories



## STORAGE TANKS

- 58** Pillow Tanks
- 58** QuickTank
- 58** Towable Bladders



## PORTABLE INCINERATORS

- 59** Drug Terminator
- 59** SmartAsh
- 60** MediBurn
- 61** Accessories

## WEED & TRASH CONTROL

- 27** Brute Boom
- 27** Brute Bin
- 62** Lake Mower™
- 63** Bottle Boom



# LANDING CRAFT WORKBOATS

**ELASTEC Aluminum Landing Crafts** are designed to operate in shallow or open waters conditions. Recognizing that response and waterway maintenance may require beaching, they are fitted with a bow ramp that allows for loading and unloading. These impressive aluminum work boats can typically achieve 30 to 40 knots, depending on choice of propulsion options. Sizes ranging from 18-32 ft / 5.4-9.7 m.





# INLANDER CUSTOM WORKBOAT

The ELASTEC Inlander Boat and Barge is a shallow draft boat setup, that facilitates a safe and user friendly configuration for response operations. The 24 ft / 7.3 m long boat has a modified V-hull with a 6-degree deadrise for maximum speed-to-weight performance in choppy or swift waters. The rectangular sheer shape of the Inlander Boat and Barge allow them to be harnessed together to form various work and dive platforms. A narrow version is also available, that can be shipped or stored in a regular shipping container. A larger 34 ft / 10.3 m model is now available.







# OMNI CATAMARAN

The ELASTEC Omni Catamaran is a versatile aluminum workboat that can perform a variety of waterway maintenance and marina service applications in sheltered waters. A variety of pods can be fitted that enable floating trash collection, quay wall and river walk wash down, sanitation pump out, cargo hauling and A-frame winching capabilities. When the deck plates are in place, the Omni Catamaran becomes a useful platform for conducting maintenance tasks.

## CUSTOM PLATFORM BOATS

The **ELASTEC Platform Boat** is a catamaran style workboat built to provide a stable and safe working platform. The clear working deck has a non slip surface for personnel or equipment. Its rugged design enables this versatile catamaran to perform a variety of waterway maintenance and marina tasks. This boat requires minimal upkeep as it has few moving parts. Propulsion is provided by a single outboard. Custom sizes are available.







# RESPONSE TRAILERS & CONTAINERS

Elastec packages trailers and containers for transporting and storing spill response equipment. They can be custom-outfitted and sourced to your specifications.

Trailers can be modified with a side door for full access to equipment or fully enclosed with a ramp/door. Open bed trailers are also available.



# SPILL KITS

Elastec offers spill kits that are suitable for multiple response scenarios and spill sizes.

- Railway Spills
- Pipeline Spills
- Creek Spills
- Trailer Kits
- Container Kits
- Vehicle Kits





## D360

The **ELASTEC D360** is a portable drone command station that allows drone operators to view live real-time feeds on a large bright screen. This station is equipped with a 32" 2500 nits professional high bright LCD display, fitted into a heavy duty utility case with cooling fans and shock absorber. This screen is easily visible in the sun, no shade is required. It will broadcast real-time drone feed to a cloud server or utility vehicle.

The D360 provides users with the same benefits of larger platforms, but in a quick deployment package, capable of movement to any location at a moment's notice. There are many options for adding additional equipment and self-customization.





# AMERICAN FIREBOOM

ELASTEC American Fireboom employs a unique high temperature resistant core and ceramic fabric components that retain structural integrity from -65°F / -54°C to more than 2,000°F / 1,093°C . It is comprised of stainless steel knitted mesh, ceramic flotation, built-in stainless steel tension cable and covered with sacrificial PVC fabric. American Fireboom can be used in a protective role (keeping burning oil away from assets) or for dynamic controlled burning operations. It can be packaged in crates, containers or pallets for storage and transport.



# HYDRO-FIRE® BOOM

ELASTEC Hydro-Fire® Boom is a state-of-the-art inflatable fire boom. It is a complete system comprised of 500 ft / 150 m of boom on a powered reel with integrated air blower, hoses, towing equipment, power pack and two high capacity water pumps. Elastec fire booms have undergone rigorous testing and have outperformed competing systems in Insitu Burn (ISB) operations. Over 90,000 ft / 27 km of our fire boom has been supplied around the world. Now available in 15 inch / 38 cm and 22 inch / 56 cm freeboard.

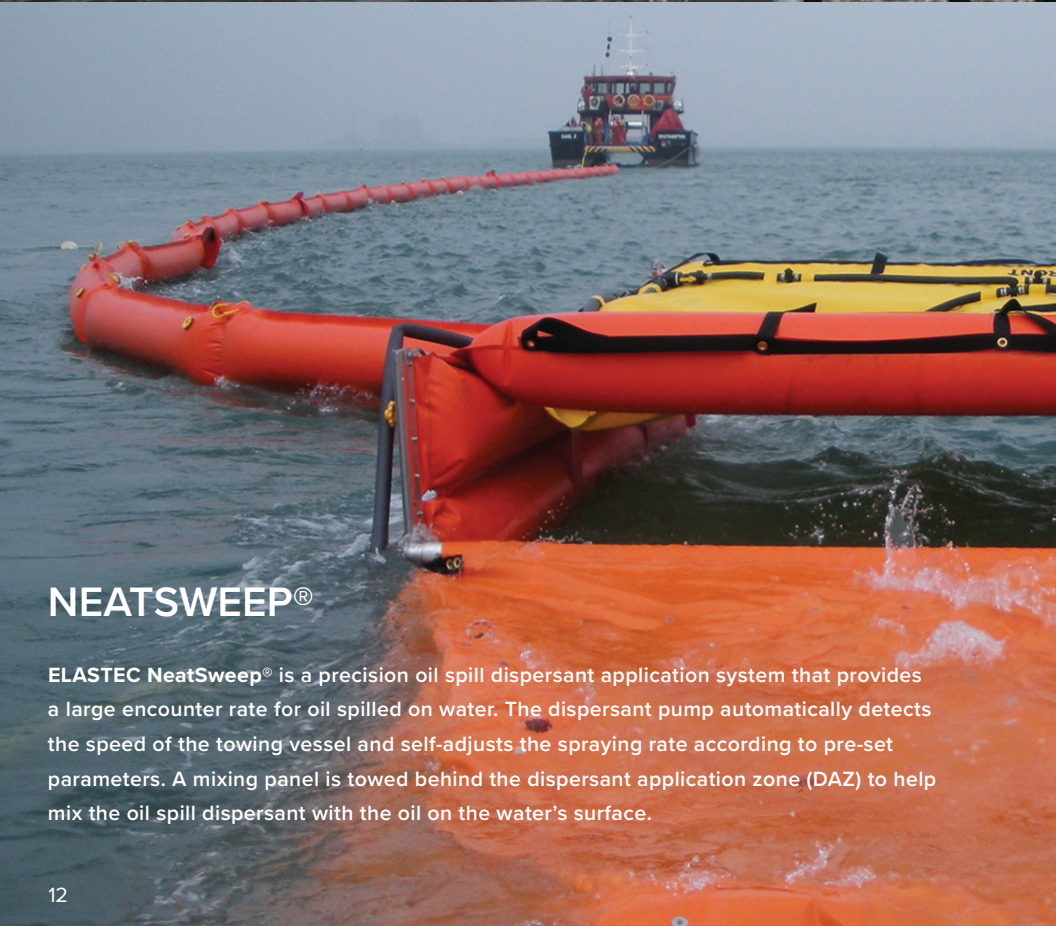






# BOOMVANE™ SPRAY

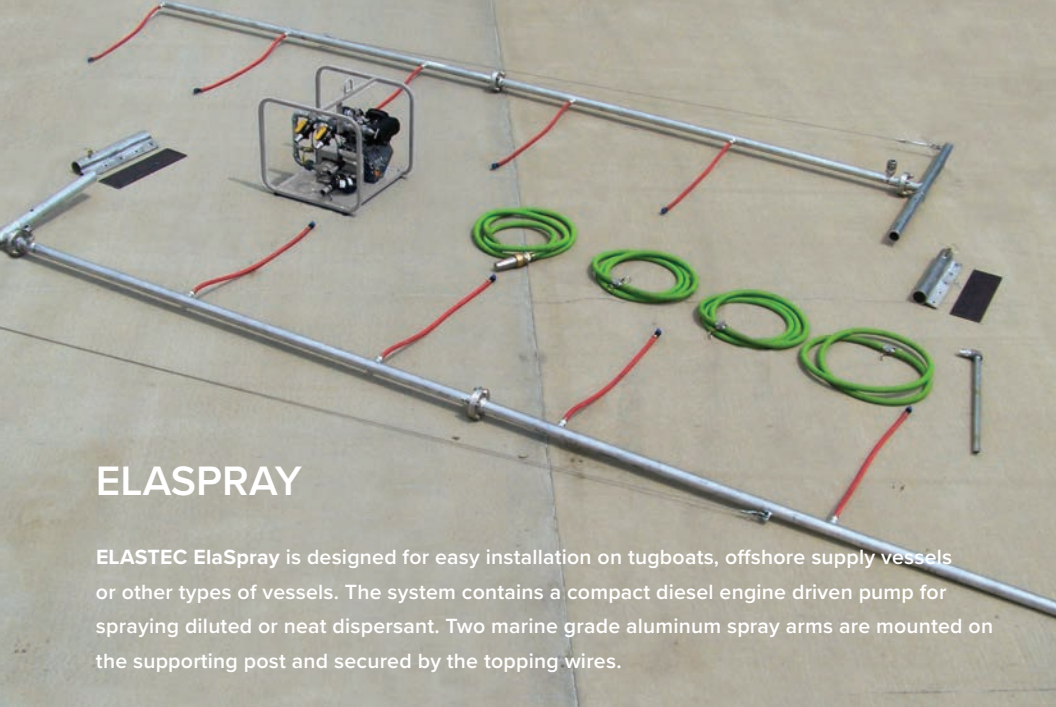
The ELASTEC BoomVane™ Spray dispersant system can be deployed from small service vessels, such as coastal fishing boats, pilot and work boats for dispersant application on marine oil spills. The 1m BoomVane allows for a wider spray width (65 ft / 20 m) than conventional arm systems.



# NEATSWEEP®

ELASTEC NeatSweep® is a precision oil spill dispersant application system that provides a large encounter rate for oil spilled on water. The dispersant pump automatically detects the speed of the towing vessel and self-adjusts the spraying rate according to pre-set parameters. A mixing panel is towed behind the dispersant application zone (DAZ) to help mix the oil spill dispersant with the oil on the water's surface.





## ELASPRAY

ELASTECH ElaSpray is designed for easy installation on tugboats, offshore supply vessels or other types of vessels. The system contains a compact diesel engine driven pump for spraying diluted or neat dispersant. Two marine grade aluminum spray arms are mounted on the supporting post and secured by the topping wires.







## SHOREMAX

**ELASTEC ShoreMax** is a special purpose inflatable oil spill containment boom for use in shallow, calm water environments or to traverse between the beach and the sea. It is ideal for making the transition between a conventional floating boom and the shoreline. Equally, it is very useful in swamp and marsh areas where the water level can rise and fall. Ballast is provided by water-filled tubes.



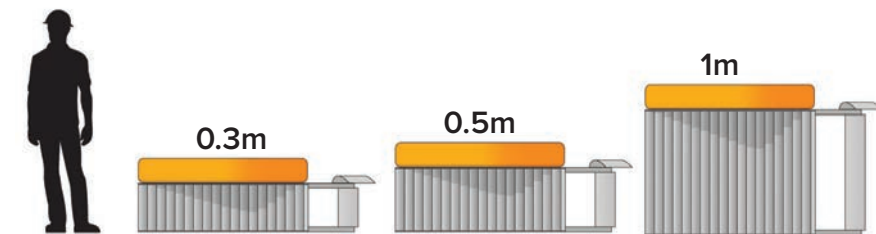
## TUNDRAGUARD

**ELASTEC TundraGuard** oil spill containment boom is effective in swamps, marshes and wetlands. It is a special purpose lightweight boom for use in shallow, calm water environments where the water level may fluctuate and cause conventional booms to leak or fail due to grounding.



# BOOMVANE™

The **ELASTEC BoomVane™** 0.3m, 0.5m and 1m models are designed for shore-based operations in rivers. The BoomVane enables boom deployment in fast currents without using boats. They can also be utilized in wide river sweep operations. BoomVane can also be towed by smaller vessels for response in larger water bodies.

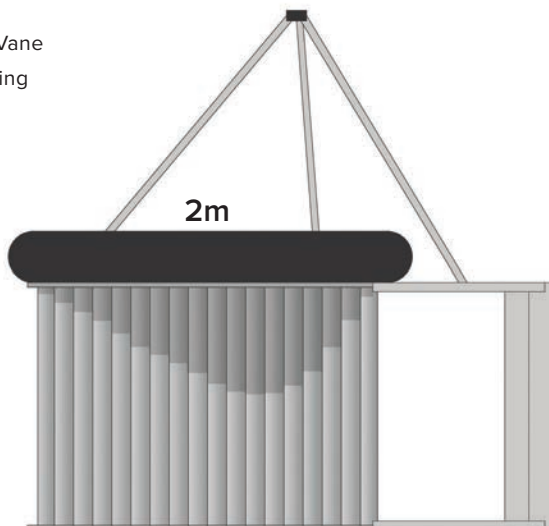
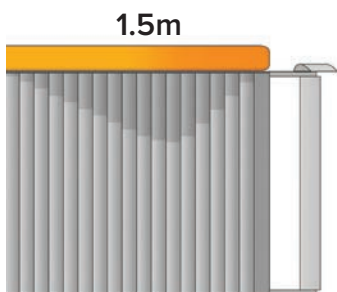






2m BoomVane

The **ELASTEC BoomVane™** 1.5m and 2m models are designed for open water towing scenarios. Employing a BoomVane eliminates the need for a second towing vessel in recovery operations.





# CURTAIN BOOM

Our foam filled curtain booms are offered in multiple sizes for small waterways up to large offshore scenarios. Fitted with cylindrical closed cell flotation and a galvanized ballast chain, they are offered in a choice of fabrics. A top cable for added strength is optional. Elastec booms conform to ASTM standards and United States CFR requirements according to bodies of water.



**SuperStream**



**SuperSwamp**



**Simplex**



**OptiMax**



**SuperMax**





## FENCE BOOM

ELASTEC MaxiMax and MiniMax oil spill fence booms are offered in a variety of sizes for rapid deployment from boom reels, racks or pallets. This oil and debris barrier is typically used for deployment in ports and harbors for surrounding vessels or protecting resources. The construction incorporates top and bottom tension members.



**MaxiMax**







## AIRMAX INFLATABLE BOOM

**ELASTEC AirMax** is a versatile, inflatable oil containment boom manufactured from high quality Urethane fabric. Optional foam panels in the air chambers provide added integrity. AirMax booms are compact and quick to deploy, and they are offered in a range of sizes to suit water conditions. This boom features a high buoyancy-to-weight ratio that delivers excellent wave conformance and oil retention. Elastec offers a full range of boom reels that can be delivered for all sizes of AirMax boom. These reels are available mounted on trailers or in storage containers.

Custom lengths available on request.

## AIRMAX V-SWEEP

**ELASTEC AirMax V-Sweep** allows single vessels to conduct sweeping operations with an optional outrigger arm mounted to the ship that holds one end of the sweep open. An oil skimmer can be placed inside the apex of the boom.

---

## RUBBERMAX INFLATABLE BOOM

**ELASTEC RubberMax** oil containment boom is produced with the latest materials and techniques. The materials have been extensively tested according to ASTM and military standards, including puncture and abrasion resistance, as well as tear and tensile strength. The construction has two plies of polyester reinforcing fabric coated in synthetic rubber with compounds which are resistant to the elements and oil. RubberMax is designed with a high buoyancy-to-weight ratio, providing the boom with excellent wave riding and oil retention characteristics. It lies flat when stowed, optimizing storage space.

## RUBBERMAX V-SWEEP

**ELASTEC RubberMax V-Sweep** is an inflatable rubber boom system for sweeping oil with a single vessel. An optional outrigger arm holds one end of the sweep open in a side sweep arrangement. The boom geometry is held in a V configuration to form a pocket of oil that can be recovered by most oil skimmers.



# BOOM REELS

**ELASTEC Boom Reels** greatly assist the deployment and recovery of containment boom with minimal manpower. Long lengths of boom can be quickly deployed and recovered. Most of our reels have the ability to free-wheel to speed up deployment or in case of power failure. Trailer mounted reels can be towed on and off-road between deployment and storage sites.





## CONTROL STANDS & BLOWERS

Elastec manufactures **boom reel control stands** which can include **high volume blowers** for inflating booms. **Backpack blowers** and diesel driven portable blowers are also available without a control stand system.



## DIESEL POWER PACKS

The **ELASTEC D9** is a compact portable diesel driven hydraulic power pack for operating a boom reel fitted with controls. A hydraulic tank is incorporated within the roll cage frame along with level / temperature gauge, filter and filler/strainer. Larger power packs are available for running hydraulically driven air blower and reel combinations.



## ELECTRIC POWER PACKS

Elastec offers compact **electric hydraulic power packs** for operating a boom reel installed on jetties or piers. Stainless steel or painted steel frames can be fitted with a choice of electric motors.





## REELPAK

**ELASTEC ReelPak** is an auto-inflating containment boom that can be easily and quickly deployed and retrieved. With an integrated coil structure and compartmented float sections, the boom will stay inflated and buoyant even if a fabric tear or light damage occurs. Available in both 250 ft / 76 m and 125 ft / 38 m sections and multiple sizes, ReelPak is suitable for most scenarios.



## BARREL-O-BOOM

**ELASTEC Barrel-O-Boom System** is a self-contained oil spill response kit that features self-inflating boom for fast, easy deployment. It has no valves and does not require any inflation equipment or special tools. Barrel-O-Boom can be easily attached to another boom of similar size to meet any containment requirement.





## PERMAFENCE & CUSTOM CONTAINMENT

**ELASTEC PermaFence** contains or excludes floating materials such as oil, weeds and trash. It is capable of withstanding long-term deployment in arduous conditions. The foam filled HDPE floats are very durable and can be easily removed from the heavy-duty belt for cleaning. PermaFence is supplied in different sizes and section lengths to suit the application or installation. A choice of belt fabrics is available, along with a range of accessories such as tidal compensators.

Elastec can manufacture a custom boom, barrier or curtain from geosynthetic materials. Whether it's aquatic harvesting, floating trash and debris, silt and sediment, oil spills or surface water pollution issues, our custom booms are designed with an emphasis on improving water quality through the reduction and control of pollutants.



## BRUTE BOOM

The **ELASTEC Brute Boom** is a heavy duty boom capable of containing trash, logs and large floating debris, as well as providing marine demarcation. Brute Boom can be deployed in rivers, reservoirs, oceans and lakes. It also performs well in fast waters.

This boom can be fitted with an optional hot dip galvanized steel skirt underneath for added protection and containment.

Brute Boom is available in 10 ft / 3 m and 20 ft / 6 m sections. Standard color is black. Other colors are available with a minimum quantity order requirement.



## BRUTE BIN

The **ELASTEC Brute Bin** captures floatables from stormwater conveyances and outfalls before they reach our waterways. It is available in two sizes.



# TURBIDITY CURTAINS

Turbidity curtains, silt curtains, silt screens, silt barriers, or turbidity barriers, as they are sometimes called, are floating barriers used in marine construction, dredging, and remediation projects to control the silt and sediment in a body of water. ELASTEC Turbidity Curtains can be set up to keep construction areas in compliance and protect the environment. American Marine, a division of Elastec, has been manufacturing quality turbidity curtains since 1967.





## SILTMAX

**ELASTEC SiltMax** turbidity curtains are floating barriers designed to control sediment and runoff at construction sites. SiltMax silt curtains are designed for easy deployment and meet the requirements of the U.S. Clean Water Act (National Pollutant Discharge Elimination System (NPDES) Phase II).

- Dredging Operations
- Marine Construction
- Remediation Projects
- Intake / Outflow Protection
- Fish Screens
- Pollution Control Curtains

## TYPE I

For use in inland waterways, **ELASTEC Type I Stillwater Screen** is specifically manufactured for turbidity control in calm conditions. Stillwater Screen is offered with impermeable and permeable options.

## TYPE II

**ELASTEC Type II Fastwater Screen** is a durable premium curtain for rivers, streams and lakes where moving water, winds and waves are present.

## TYPE III

If the project requires a deep curtain for difficult conditions and flows, **ELASTEC Type III Ruffwater Screen** is the barrier of choice.





# BAFFLES

**ELASTEC Baffle Systems** slow the flow of wastewater in treatment lagoons to allow more time for sediment fall-out. Baffles are manufactured in lengths up to 2,500 ft / 762 m to reduce on-site assembly time. The float and underwater tension cable are completely enclosed for strength and wind resistance. All seams are thermal dielectric welded, eliminating the vulnerabilities of stitching. Reinforced flow-through windows are incorporated to accommodate varying flow rates.



Beach Bouncer Type I



Beach Bouncer Type II



Beach Bouncer Type III

## BEACH BOUNCER

**ELASTEC Beach Bouncer** is a mesh-skirted deflection boom designed to keep Sargassum seaweed and other invasive macroalgae (seaweeds) from reaching commercial beaches. Multiple versions are available to best suit the installation environment.



# MOORING ACCESSORIES

Elastec offers many accessories for mooring or installing booms to piles, quay sides and docks.



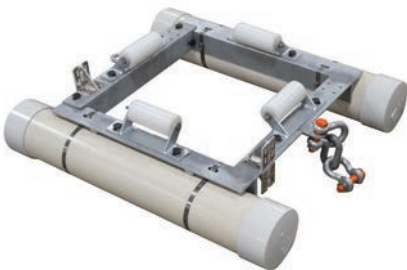
Pile Slider (Buoy)



Pile Tether



Boom Standoff



Square Pile Slider

# ANCHOR SYSTEMS

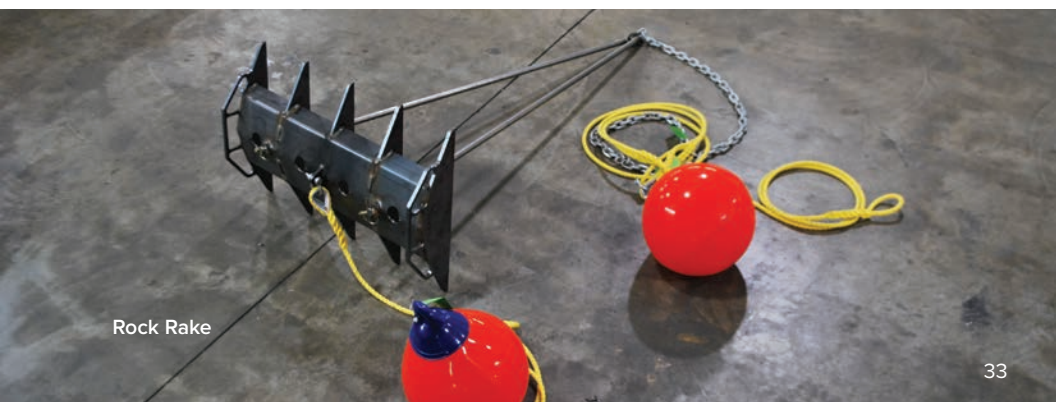
Elastec offers multiple styles of anchor systems, including Danforth, TerraTwist and Rock Rake.



Danforth Anchor Kit



TerraTwist



Rock Rake



# BOOM ACCESSORIES



**Tow Bridle with Bullet Float**



**Three Way Connector**



**Tow Bridle with Bullet Float**



**Magnetic Hull Connector**



**Tidal Compensator**

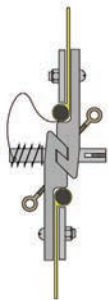
# BOOM ACCESSORIES



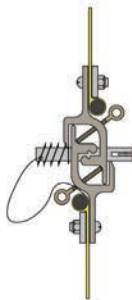
ASTM Connectors



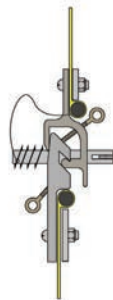
Grapple Hook



ASTM "Z"  
Connector



Mini Slide  
Connector

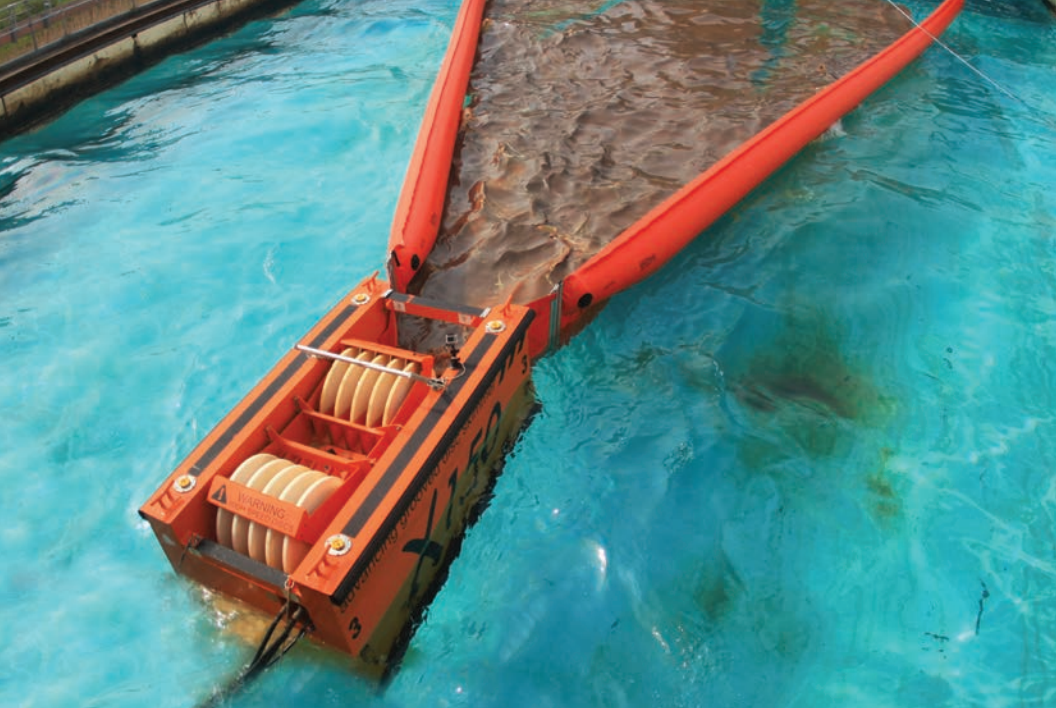


Mini Slide &  
"Z" Connector



Fabric Repair Kit





## X150 ADVANCING GROOVED DISC SKIMMER

The **ELASTEC X150** is an advancing Grooved Disc Skimmer that features the breakthrough oil skimming technology of our 64-disc prototype that won the Wendy Schmidt Oil Cleanup X CHALLENGE by recovering 4,670 gallons of oil per minute.

## X150 LAUNCHING SYSTEM

The **ELASTEC X150 Skimmer Launching System** combines the X150 Grooved Disc Skimmer, power pack, boom reel, hoses and BoomVane™ and is packaged to fit into a 20 ft container for rapid global shipment.





## X30 GROOVED DISC SKIMMER

The **ELASTEC X30** features twin discs in a module that can be incorporated into a bow or over-the-side sweep system. Skimmed oil may be contained in on-board tanks or towed in an ELASTEC Towable Bladder. The X30 has been validated at Ohmsett.







## TDS118 DRUM SKIMMER

The **ELASTEC TDS118 Drum Skimmer** is available in pneumatic or hydraulic drive for oil spill response or industrial use. Due to its shallow draft and light weight, this practical skimmer is ideal for cleanup in creeks, rivers and lakes. Brush and Disc versions are available.



**Anodized Aluminum**

TDS118 may be supplied with an Anodized Aluminum or Polyethylene HD frame. This skimmer is widely used in the Palm Oil industry for the recovery of waste oils. TDS118 is capable of withstanding these temperatures as well as the corrosive conditions.



**PE / CRX**

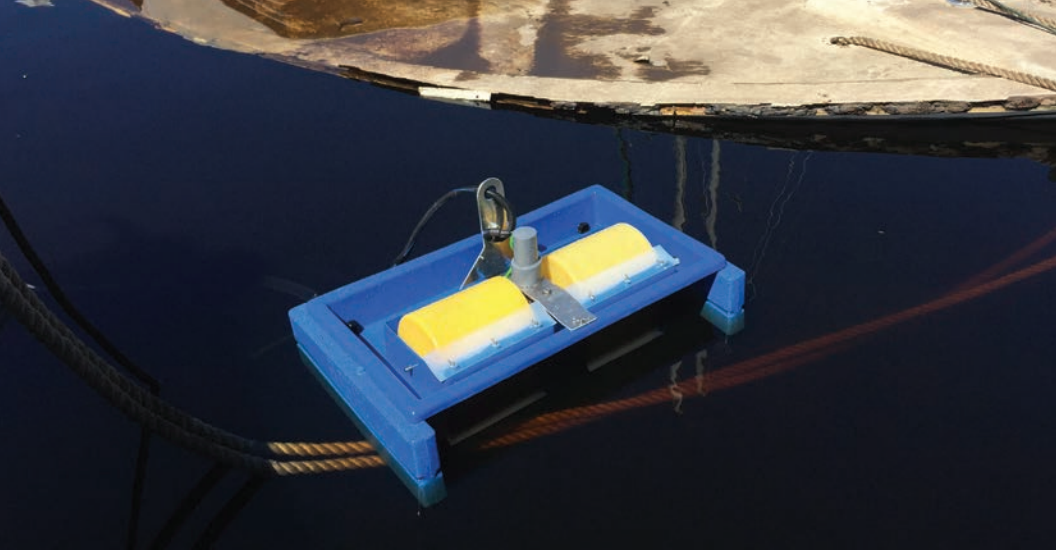
For acidic environments the polyethylene construction may be used while the shafts and bearings are upgraded to stainless steel. For the copper mining industry, recovering organic oils in acidic ponds, we offer the CRX model, which has upgraded components.



## TDS136 DRUM SKIMMER

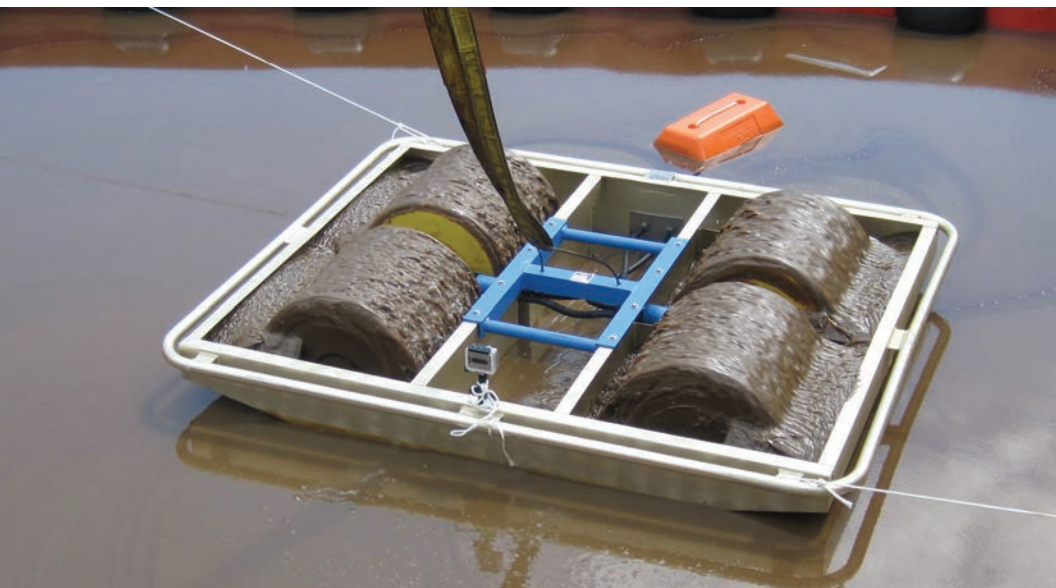
The **ELASTEC TDS136 Drum Skimmer** is widely used in continuous duty industrial applications, as well as near shore response. This lightweight skimmer mixes high recovery rates with portability as it can be easily handled by two people.





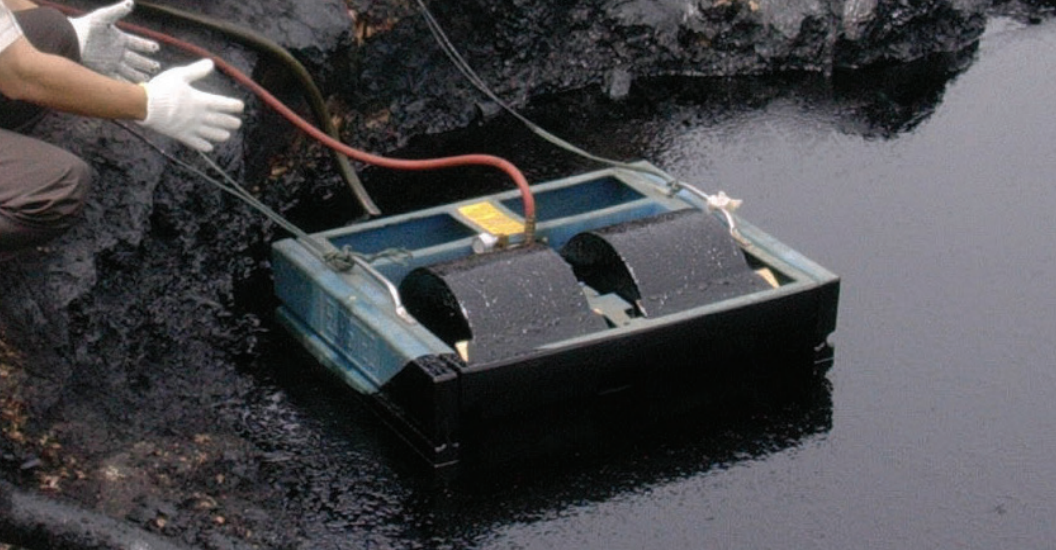
## 12V MINI DRUM SKIMMER

The **ELASTEC 12V Mini Drum Skimmer** is a small and lightweight oil skimmer for industrial applications or small inland spills. Powered by a 12V DC motor, it can run for long periods from a standard car battery or continuous 110V / 220V power supply.



## MAGNUM 100

The **ELASTEC Magnum 100 Drum Skimmer** is suited for larger spills in inland and coastal waters. The four drums provide more stability in open water, while an optional Wave Breaker increases the freeboard. Steam coils can be fitted for cold environments.



## MINIMAX DRUM SKIMMER

The **ELASTEC MiniMax Drum Skimmer** is manufactured in HDPE, making it resistant to many chemicals found in industrial pits, sumps, separators and tanks. Special versions are available for high temperature and highly acidic environments.



## MAGNUM 200

The **ELASTEC Magnum 200 Drum Skimmer** can be deployed from boats for open water response. In the photo, a Wave Breaker is attached, which increases the freeboard of the skimmer.





# HERMIT DRUM SKIMMER

The **ELASTEC Hermit Skimmer** is designed to fit inside tanks with small openings. This lightweight skimmer is capable of fitting through a 20 inch / 50 cm hatch in waste oil tanks, sumps or manholes. The pneumatic motor can be operated with a small compressor or plant air. Supplied with an optional air operated diaphragm pump, it can recover a wide range of oils. *Note: Not for hazardous locations.*



# STEAM HEAT SYSTEMS

Our Drum Skimmers are available with a **Steam Heating System** for cold environments. Steam coils can be installed in the collection troughs on new or existing skimmers. The heat transferred by the steam helps the skimmer to function by melting the snow and ice surrounding the skimmer, allowing the oil to flow onto the collection drums. It also warms the oil that is being picked up, aiding the flow to the transfer pump and preventing the hoses from freezing.

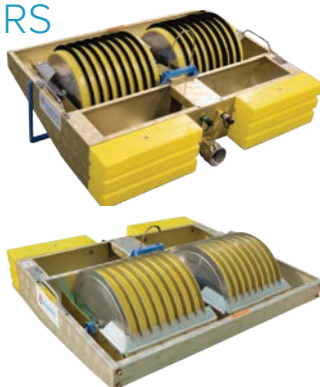


## ROV SKIMMER

The **Elastec ROV Skimmer** is a remote operated vessel designed to provide an effective method of oil recovery from a variety of situations. The patented drums rotate on the surface of the water collecting oil as they turn. The wipers remove the oil from the drums into the skimmer collection trough. The pump transfers the recovered oil from the skimmer trough and deposits it in the oil recovery tank. Once full, the system can be driven back to shore to discharge the collected oil into a larger container for reuse or disposal.

## BRUSH & DISC (DRUM) SKIMMERS

Elastec offers a lineup of Disc and Brush inserts for our well-proven range of drum skimmers. These inserts represent patented technology that not only enhance recovery rates, but also expand the viscosity range that can be collected. All inserts retain the lightweight and shallow draft features of the skimmer head that is so popular with responders. Drum inserts are interchangeable in the field with minimal tools and effort.



## SKIMMER CONFIGURATIONS

Elastec can provide a full package of matched components - skimmer, pump and power pack. Alternatively, the skimmer head can be supplied alone - typically with a pneumatic drive. Elastec also offers a full range of pumps to match the application.



Skimmer, Pump and Diesel Hydraulic Power Pack





## SEASKATER WEIR SKIMMER

The **ELASTEC SeaSkater Weir Skimmer** has large diameter floats to increase the water line beam, which offers responsiveness to wave movements. The high buoyancy-to-weight ratio limits drastic changes in draft due to skimmer loading. The unique aluminum frame is constructed to increase the impact resistance and strength of the skimmer.

The **ELASTEC SeaSkater NP** is available without a pump for use with vacuum systems or a self priming external pump.

## OCEANSKATER WEIR SKIMMER

**ELASTEC OceanSkater Weir Skimmer** is a larger version of Elastec's proven SeaSkater system. Offering higher recovery rates within a lightweight and robust design, this skimmer is typically supplied as a system with a diesel hydraulic power pack, hoses and hose reel.

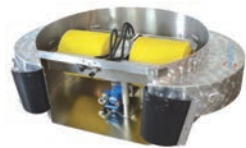




# CIRCUS WEIR SKIMMER

The **ELASTEC Circus Weir Skimmer** is an in-line oil skimmer that is coupled with river boom. The skimmer has a circular chamber that accumulates and concentrates oil. Internally, the Circus can be fitted with either a weir or drum for oil removal.

Tested at Ohmsett, the Circus Skimmer recovered 90% oil at two knots of current.



Circus Skimmer with Counter Rotating Drums and E150 Pump



Circus Skimmer with E150 Pump & Internal Weir



Circus Skimmer with Internal Weir





## SHOVELHEAD SUCTION SKIMMER

**ELASTEC ShovelHead Suction Skimmer** is a floating suction-head that can be attached to any suitable suction pump. The suction skimmer head is manufactured in molded polyethylene and can recover light oils or liquids from the water surface. The head has a draft of only 2 inches / 50 mm, enabling it to operate in very shallow water.



## PELICAN WEIR SKIMMER

The **ELASTEC Pelican Weir Skimmer** is a self-adjusting weir skimmer. It can be used in a stationary mode or connected to river booms that will funnel oil to the skimmer entrance. The weir automatically adjusts to suction rate.

NEW



Duck 50



Duck 100

## DUCK WEIR SKIMMER

The **ELASTEC Duck Weir Skimmer** is a self-adjusting, floating weir skimmer that can be used for duckweed or water meal removal as well as oil spill response.





# PORTABLE FILTERBELT SKIMMER

The **ELASTEC / MARCO Portable Filterbelt Skimmer** filters oil and debris from the water. The water passes through the belt while the oil is scraped into a sump hopper. Debris is manually collected in a separate container. Marco Filterbelts are offered with multiple types of replaceable pads matched to the oil type to be collected. The pads adhere to the belt. Alternatively for heavy oil recovery, just the backing belt is used.





D22 with Magnum 200

## POWER PACKS

Elastec offers a wide range of **hydraulic power packs** to operate boom reels, oil skimmers and pumps. Power packs are available with either diesel or electric drive. We currently manufacture models from 3 hp / 2.2 kW to 100 hp / 74 kW with a choice of options.

**Electric power packs** are available with TEFC or explosion-proof motors and starters. Electric power packs can be matched to the electrical requirements of the installation.

The new D23S is fully enclosed for sound attenuation in a water-resistant body with swing-up side doors for maintenance access.

We also offer ATV tires and tracks for towing in remote locations.

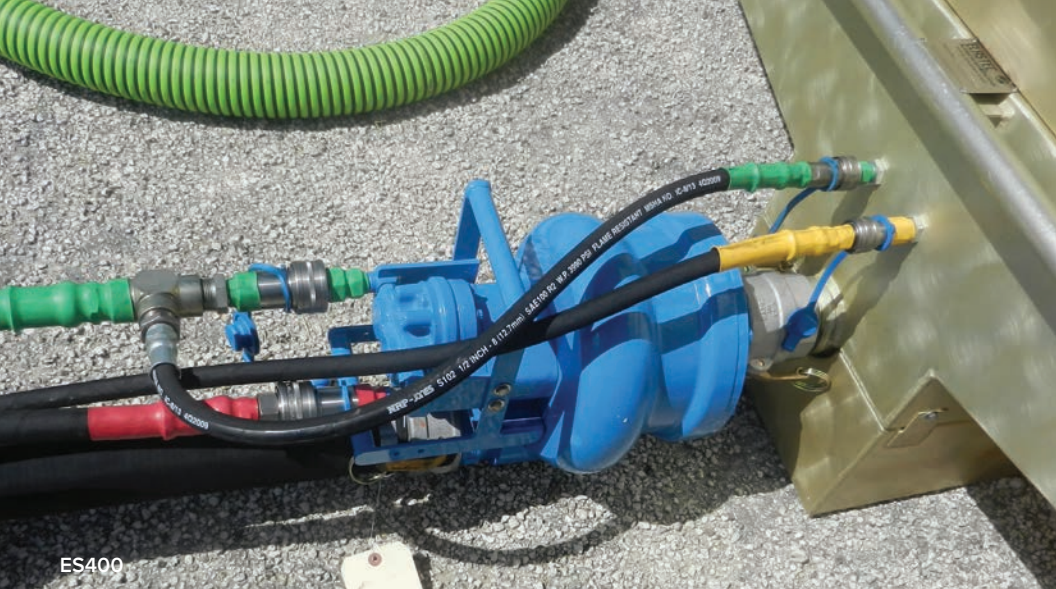


D10 (with optional drop handles)



E10





ES400

## PUMPS

Elastec offers a full range of pumps for use in oil spill and remediation projects plus general duties. Whether you are transferring water, collected oil, or a wide range of liquids, we can provide you with a pump that will fit your needs.

**Submersible | High Capacity Water | Peristaltic | Self-Priming Centrifugal | Lobe  
Diesel Diaphragm | Pneumatic Diaphragm**



Lobe Pump



# WORKSHOPS

Elastec offers workshops throughout the year to share and foster oil spill knowledge and techniques. Visit **[www.elastec.com/elastec-workshops](http://www.elastec.com/elastec-workshops)** for more information.

**Earn credit towards continuing education and HAZWOPER refresher.**







PACS 2000

## PACS - TRAILER MOUNTED VACUUM SYSTEMS

**ELASTEC PACS** trailer mounted vacuum systems are designed for removing liquids, solids and sludge from land or water. Less expensive than vacuum trucks, PACS units are approved for highway towing. Models with integral hydraulics can run oil skimmers and pumps, as well as lift the tank vertically to dump contents.



Optional TDS118 shown.





## ALL TERRAIN VAC

The **ELASTEC All Terrain Vac** is a high powered vacuum system that is mounted on an ATV towable chassis. The unit is ideal for working in remote areas such as beaches, pipelines and industrial locations. The All Terrain Vac can recover a wide range of liquids, oils and sludge with solids up to 2 inch / 50 mm diameter.







## ELECTRIC MINIVAC

The electrically driven **ELASTEC MiniVac** is a high-powered system that is skid mounted with fork pockets (optional wheels are available on request) that is designed for industrial locations where a power source is available. The electrically driven MiniVac vacuum system can recover a wide range of liquids, oils and sludge.

The vacuum pump quickly generates suction and high airflow, while liquids and solids are recovered into standard drums or our hopper device (optional.)





## MINIVAC II

The **ELASTEC MiniVac II** is a powerful, portable vacuum unit that can recover a wide range of liquids, oils and sludge with entrained solids up to 2 inch / 50 mm diameter. The diesel-driven high capacity pump quickly generates a vacuum inside standard drums using an **ELASTEC DrumIt** head (optional). Also available is an optional hopper unit or 110 gallon / 416 litre tank.



## MINIVAC III

The **ELASTEC MiniVac III** can generate high levels of air flow and vacuum due to the vane pump design, making it ideal for working in industrial locations. The vacuum can be applied to our optional hopper system or alternative suitable vacuum vessels.





## VACUUM ACCESSORIES

Above: The 110 gallon / 416 litre **ELASTEC All Terrain Vacuum Tank** features fully welded aluminum construction, full opening doors on both ends, two sight glasses for level indication and automatic shut-off with bypass valve to control the vacuum.

Below: **ELASTEC DrumIt** is a drum-top vacuum head that attaches to a 55 gallon / 208 litre drum allowing liquids and wet solids to be intercepted and stored. It features an automatic shut off and adjustable vacuum relief valve. A ball lifts in the sight glass to indicate when the drum is full. DrumIt fills each drum to a consistent level every time. Dry particulate filter head also available.





Above: The **ELASTEC Vacuum Hopper** includes automatic shut-off, full opening dump valve and retractable legs for easy transport and storage.

Bottom Left: The **Duck Bill Wand** can be used to suck up liquids from flat surfaces. The bill can be removed to provide a suction wand.

Bottom Right: The **ELASTEC Water Injector** is an in-line attachment that can be connected to a water hose to feed liquid into the contents being sucked up to help reduce dust.





# PILLOW TANKS

**Pillow Tanks** are collapsible containers that provide temporary, as well as long term, liquid storage. Pillow Tanks are a cost-effective option for a variety of liquids including wastewater, fuels, consumables, potable (drinking) water, fruit juices, and oils.



# QUICKTANK

**QuickTank** is an open liquid storage tank with a rigid aluminum frame that is designed for quick and easy assembly. A choice of fabrics and capacities ranging from 500 gallons / 1.89 cu. m to 8,000 gallons / 30 cu. m are available.



# TOWABLE BLADDERS

**ELASTEC Towable Bladders** are temporary, collapsible liquid storage containers that can be used to store oil and other liquids on land or in water. Sizes ranging from 500 gal / 1,893 L to 3,500 gallons / 13,249 L are available. They can be towed by boat, empty or full.



# DRUG TERMINATOR

**ELASTEC Drug Terminator** is used by law enforcement, military and medical facilities for the disposal of evidence drugs and take-back medicine programs. Drug Terminator is wood or charcoal-fired. Two high velocity electric blowers create a cyclone of intense heat, eliminating drugs almost immediately. The volume of material is reduced to an average of 3% ash. Non-combustible drug paraphernalia is sterilized by heat and can be disposed in municipal waste.



# SMARTASH

**ELASTEC SmartAsh Cyclonic Barrel Burner®** is a portable, small-batch incinerator that meets U.S. EPA requirements for burning non-hazardous refuse. Load a 55 gallon / 208 litre open head steel drum, light the load, and clamp on the lid. A whirlwind of fire and intense heat is created inside the drum, burning refuse without smoke or smell. Once combustion is complete, only 3% ash remains.







# MEDIBURN

**ELASTEC MediBurn** is the safe and simple solution for the disposal of municipal and medical waste. An improved control system provides up to 50% more fuel savings. New safety features and multi-lingual displays are important enhancements for global use. The MediBurn destroys up to 110 lb/hr / 50 kg/hr of medical waste and is available in two sizes. Dual chamber combustion with high exhaust temperatures in excess of 1,832°F / 1,000°C ensure clean burning of materials.

# INCINERATOR ACCESSORIES



The **ELASTEC SmartHeat** pulls cool air from inside the building, forces it through the exterior heat exchanger (located above SmartAsh), and returns heated air to assist in warming the facility. The super-heated air provides up to 400,000 BTU per hour of auxiliary “Free Heat”.



The **ELASTEC Drug Take Back Box** is an accessory to accompany the Drug Terminator. It features a key locked deposit box, pad locked retrieval door and floor bolt anchor holes.



The **ELASTEC Document Burner** is an insert that fits into the drum of a SmartAsh. This insert insures complete incineration of paper products and important documents when no other high BTU material is added.



The **ELASTEC OilAway** is an accessory for the SmartAsh Cyclonic Barrel Burner that injects waste oil into the barrel during the burn cycle. This allows the SmartAsh to burn “wet” loads typically not burnable. SmartAsh with the OilAway Attachment also eliminates waste oil at rates up to 6 gallon/hr / 23 litre/hr.





## LAKE MOWER™

The **Lake Mower™** by **ELASTEC** is a cost-effective, environmentally friendly, mechanical aquatic weed control tool. The proven Lake Mower is the premier lake weed cutter on the market today. It can especially be useful during oil spill response situations where shoreline access may be covered with vegetation. Pair with the **Lake Rake** for easy removal of trimmings.



PURCHASE ONLINE AT  
[www.lakemower.com](http://www.lakemower.com)



## BOTTLE BOOM

**ELASTEC Bottle Boom** is a debris collection barrier that anyone can use at home. The boom is supplied as an empty sleeve that the owner can stuff using sealed plastic bottles. The boom is then installed in a local small creek or waterway to collect floating trash and debris. The Bottle Boom is ideal for groups looking to complete a community service project, such as Scouting groups, 4-H clubs, schools, or any group concerned with environmental cleanup.



PURCHASE ONLINE AT  
[www.waystofightplasticpollution.com](http://www.waystofightplasticpollution.com)







100% Employee Owned

1309 West Main, Carmi, IL 62821 USA - Headquarters

Tel: +1 (618) 382-2525 Fax: +1 (618) 382-3610

Email: [elastec@elastec.com](mailto:elastec@elastec.com)

[www.elastec.com](http://www.elastec.com)



---

#### Additional Locations

926 County Road 1350 N, Carmi, IL 62821 USA

401 Shearer Blvd., Cocoa, FL 32922 USA

211 N. Market St., Fairfield, IL 62837 USA



[www.facebook.com/Elastec](https://www.facebook.com/Elastec)



[www.linkedin.com/company/elastec](https://www.linkedin.com/company/elastec)



[www.instagram.com/elastecinc](https://www.instagram.com/elastecinc)



[www.youtube.com/user/ElastecMovies](https://www.youtube.com/user/ElastecMovies)



[www.vimeo.com/elastec](https://www.vimeo.com/elastec)



[www.twitter.com/elastec](https://www.twitter.com/elastec)